

## Introduction of IFC Model Server Project



VTT Building and Transport / SECOM Co., Ltd  
yoshinobu.adachi@vtt.fi



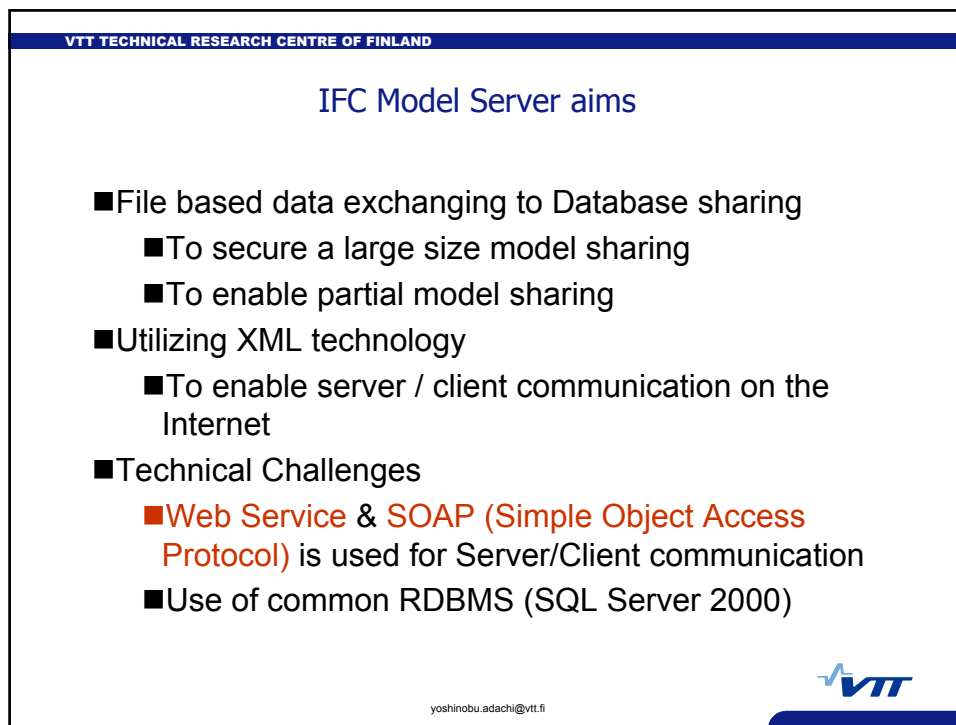
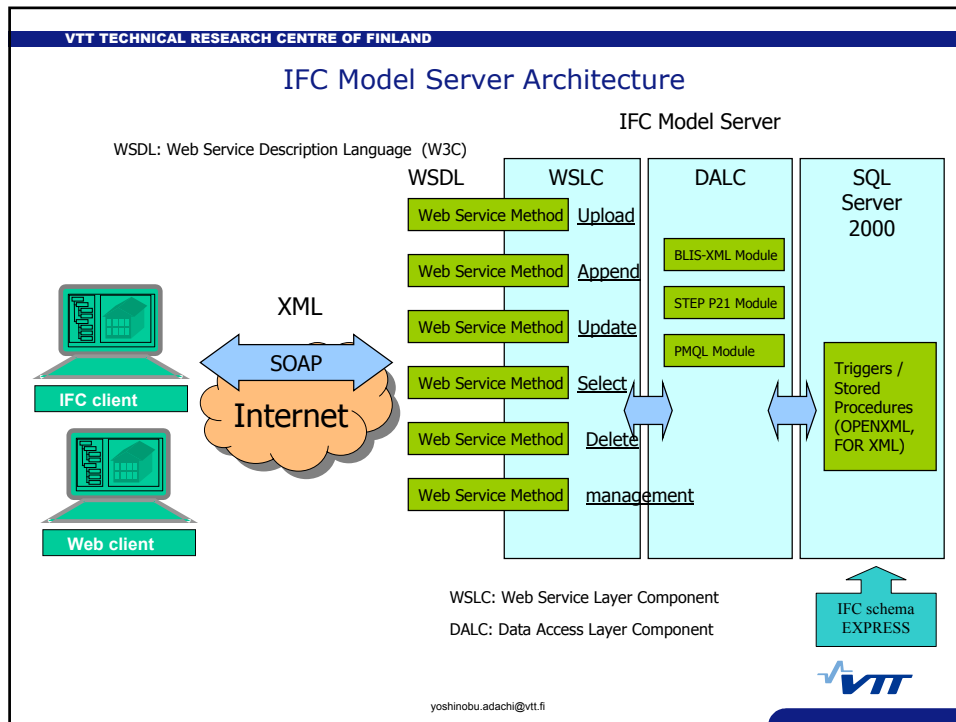
VTT TECHNICAL RESEARCH CENTRE OF FINLAND

### *Key Concepts*

- **IFC (Industry Foundation Classes)**
  - Object Model Data of Building Project
- **Model Server**
  - To enable model data sharing
- **Database**
  - To store IFC data
- **Web Service**
  - To enable Server/Client communication on the Internet
- **XML**
  - XML format of IFC data (BLIS-XML, etc)

yoshinobu.adachi@vtt.fi





## Web Service & SOAP

- ❑ **Web service** is a programmable entity that provides a particular element of functionality, such as application logic, and is working on the Internet .
- ❑ **Web service** allows heterogeneous systems to work together.
- ❑ SOAP is an important part of Web Service.
- ❑ **SOAP (Simple Object Access Protocol)** is a W3C specification for invoking methods on servers, services, components and objects.
- ❑ SOAP is based on the existing technologies such as **XML** and **HTTP** as a method invocation mechanism.
- ❑ SOAP can go through Firewall.

yoshinobu.adachi@vtt.fi



## Example of SOAP Communication between IFC Model Server and Client software

- ❑ Request: Get an IFC object

```
<?xml version="1.0" encoding="UTF-8" standalone="no" ?>
- <SOAP-ENV:Envelope SOAP-ENV:encodingStyle="http://schemas.xmlsoap.org/soap/encoding/" xmlns:SOAP-ENV="http://schemas.xmlsoap.org/soap/envelope/">
- <SOAP-ENV:Body>
- <SOAPSDK1:GetObject xmlns:SOAPSDK1="http://tempuri.org/message/">
  <strUserName>user1</strUserName>
  <strPassword>user1</strPassword>
  <strProjectName>fortun_model</strProjectName>
  <strOID>7DD99129D5FD439DAF1D1E432B47CE62</strOID>
</SOAPSDK1:GetObject>
</SOAP-ENV:Body>
</SOAP-ENV:Envelope>
```

Parameters of Web Service Method

Web Service Method on IFC Model Server

- ❑ Response from Server

```
<?xml version="1.0" encoding="UTF-8" standalone="no" ?>
- <SOAP-ENV:Envelope SOAP-ENV:encodingStyle="http://schemas.xmlsoap.org/soap/encoding/" xmlns:SOAP-ENV="http://schemas.xmlsoap.org/soap/envelope/">
- <SOAP-ENV:Body>
- <SOAPSDK1:GetObjectResponse xmlns:SOAPSDK1="http://tempuri.org/message/">
  - <Result>
    <IfcBuildingStorey GlobalId="bMt9bs>|bZR:ESVe%k@e2"
      OwnerHistory="B2A44FD17EE64CD0B74DF0DEEDF4EA26"
      LocalPlacement="43DE79F9E88144DB9F8CA8CE7C91D46" BuildingStoreyReference="ACID1"
      BuildingStoreyName="" Elevation="0" calcTotalHeight="0" calcTotalArea="0" calcTotalVolume="0" />
  </Result>
</SOAPSDK1:GetObjectResponse>
</SOAP-ENV:Body>
</SOAP-ENV:Envelope>
```

IFC Object data (Enhanced BLIS-XML format)

yoshinobu.adachi@vtt.fi





**Kiitos**

END

Thank you

More information: <http://cic.vtt.fi/projects/ifcsvr/>

yoshinobu.adachi@vtt.fi

